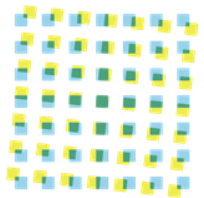


About Nature

—

biodiversity,
water, resources
and circular
economy



sustainerv
Inspiring Meaningful Change



Nature in brief



What Topics Are Summarized Under Nature

Nature is an umbrella term in corporate strategy and reporting, summarizing:

- Biodiversity (species, ecosystem integrity, genetic diversity)
- Water (availability, quality, watershed resilience)
- Land use (deforestation, soil health, land conversion)
- Pollution (chemical, plastic, nutrient, and waste contamination)
- Circular Economy (resource stewardship, recycling, regeneration)
- Ecosystem services (e.g., pollination, climate regulation, flood protection)

Sustainserv's take

- 1. Nature is a core business risk.** Mismanaging biodiversity, water, and pollution can threaten a company's survival.
- 2. Global standards drive action.** Frameworks like TNFD, IFRS, GRI and ESRS require companies to measure and report nature impacts.
- 3. Evidence-based strategies are vital.** Assess, plan, engage, and disclose - partnering with our experts helps avoid costly mistakes.

! [Nature – biodiversity, water, resources and circular economy - sustainserv.com](https://sustainserv.com/nature-biodiversity-water-resources-and-circular-economy)

Our Engagement



Lead of German TNFD Consultation Group

Neues Netzwerk zur naturbezogenen Finanzberichterstattung gestartet - sustainserv.com



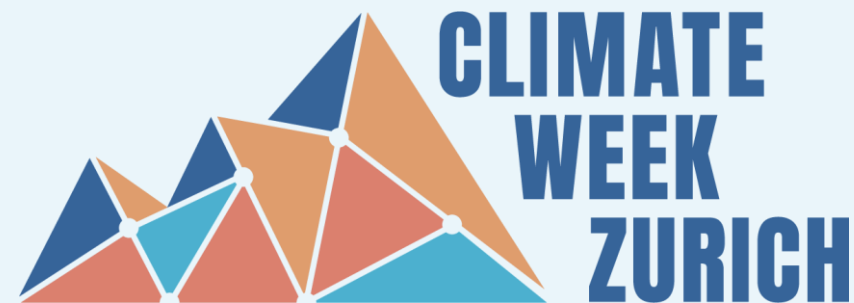
See: [Deutsche TNFD Consultation Group - BAUM e.V.](https://www.baum-e.v.de/en/tnfd-consultation-group)

UN Global Compact Switzerland and Liechtenstein member
and engaged in the GCNSL Nature Exchange Group

[Nature Exchange Group | GCNSL](https://www.gcnsl.ch/nature-exchange-group)

Bronze Sponsor at Climate Week Zürich

[Climate Week Zurich \(May 2026\) - sustainserv.com](https://sustainserv.com)



See: <https://climateweekzurich.org/>

New York City Climate Week event host

[Sustainserv's NYC Climate Week Event - sustainserv.com](https://sustainserv.com)

Project Experiences and Tools



Our experiences

- Climate and Nature risk assessments and ERM integration for different industries
- Water dependency and impact evaluations
- Biodiversity analysis and risk assessment for industrial and financial sector clients
- Circularity and resources use optimization using Ecodesign concepts

Our Toolbox (open access and commercial)

- ENCORE (by UNEP)
- Risk filter suite for biodiversity and water (by WWF)
- Aqueduct Risk Filter Atlas (by WRI)
- Thinkhazard
- Correntics
- Climada

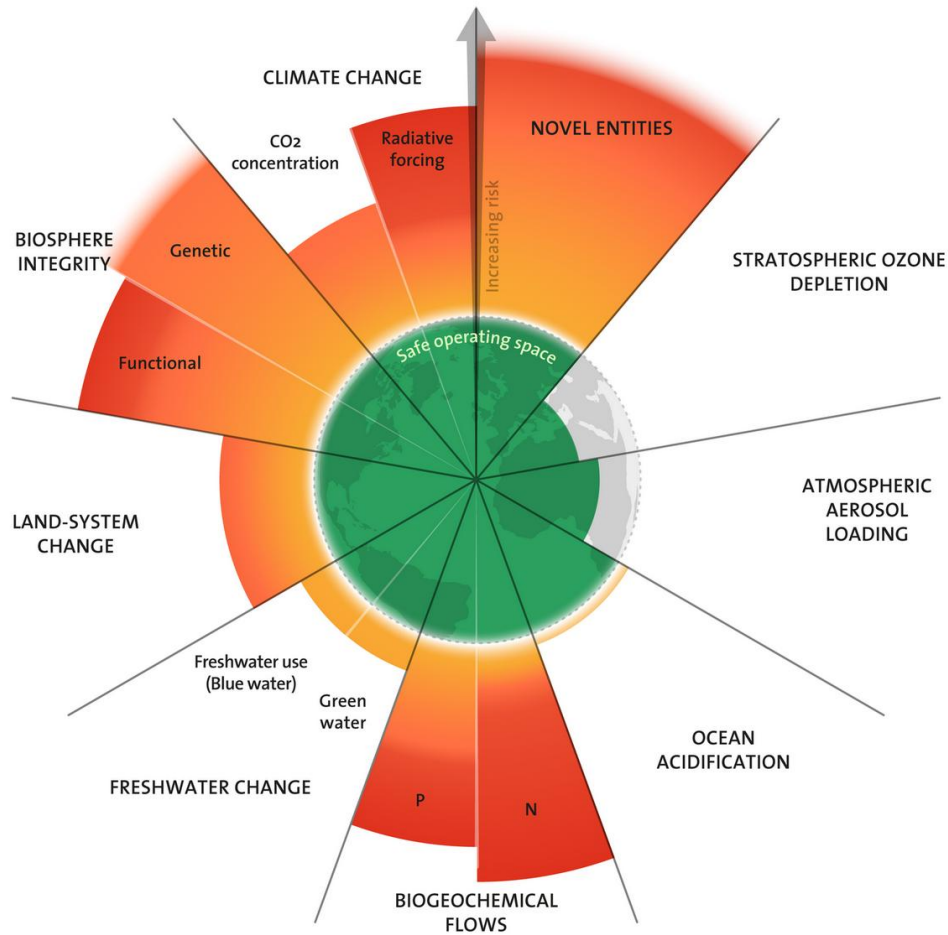
Reach out for client references and further client-specific tools.

Why

...care about Nature?



Planetary Boundaries – Today



Sustainserv's take

- Global boundaries have local implications, e.g., on
 - biodiversity
 - ecosystem services
 - natural resources
- 7 out of 9 boundaries have already been crossed (2025).

The 2025 update to the Planetary boundaries. Licensed under CC BY-NC-ND 3.0. Credit: "Azote for Stockholm Resilience Centre, based on analysis in Sakschewski and Caesar et al. 2025".

Global Risks – Future



FIGURE C

Global risks ranked by severity over the short and long term

"Please estimate the likely impact (severity) of the following risks over a 2-year and 10-year period."

Risk categories

- Economic
- Environmental
- Geopolitical
- Societal
- Technological

2 years

- 1st Misinformation and disinformation
- 2nd Extreme weather events
- 3rd State-based armed conflict
- 4th Societal polarization
- 5th Cyber espionage and warfare
- 6th Pollution
- 7th Inequality
- 8th Involuntary migration or displacement
- 9th Geoeconomic confrontation
- 10th Erosion of human rights and/or civic freedoms

10 years

- 1st Extreme weather events
- 2nd Biodiversity loss and ecosystem collapse
- 3rd Critical change to Earth systems
- 4th Natural resource shortages
- 5th Misinformation and disinformation
- 6th Adverse outcomes of AI technologies
- 7th Inequality
- 8th Societal polarization
- 9th Cyber espionage and warfare
- 10th Pollution

Source

World Economic Forum Global Risks
Perception Survey 2024-2025.

Sustainserv's take

- 5 out of the 10 most severe long term risks are nature-related.
- Every business faces nature-related risks: In its own operations, its value chain or via financial markets.

What

... do corporates need to know
and do about nature?



The Big 5: Drivers of Change



Climate change

Example:
Do you know all emissions in your value chain?



Land/ freshwater/
ocean use change

Example:
What is the land footprint of your business?



Resource use/
replenishment

Example:
How much water and other resources do you use in circularity?



Pollution/
pollution removal

Example:
Which critical substances are used in your value chain?



Invasive alien
species introduction/
removal

Example:
Which of your used ecosystem services affect biodiversity?

Sustainserv's take

- Businesses usually have multiple interconnections to nature-related topics and the drivers of nature change.
- Many businesses require a structured holistic approach for nature.

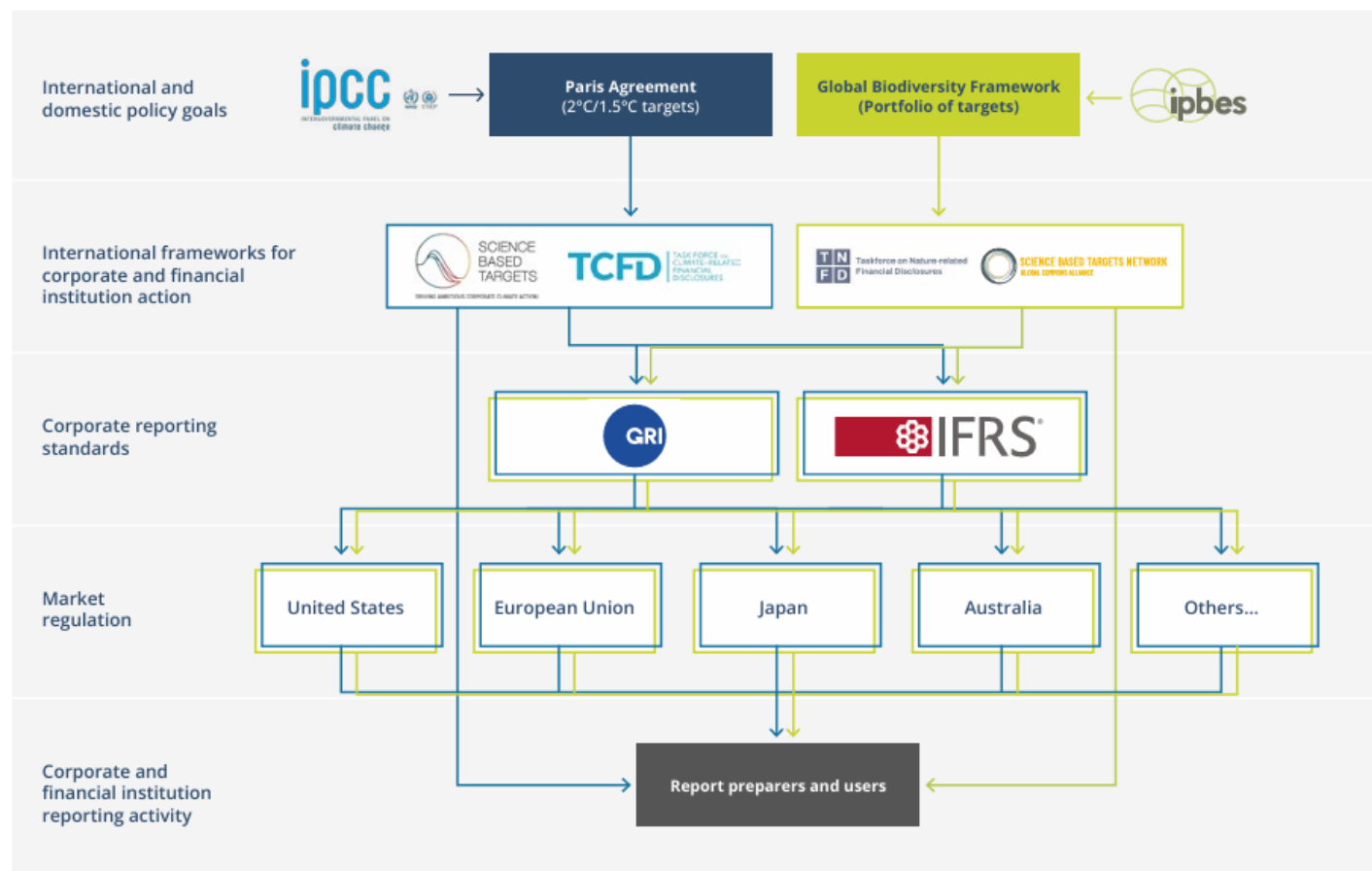
Source Icons: <https://tnfd.global/publication/recommendations-of-the-taskforce-on-nature-related-financial-disclosures/#publication-content>

Climate and Nature



Sustainerv
supports
readiness for
Climate:

TCFD, SBTi,
GRI, ESRS,
IFRS,...



Sustainerv
supports
readiness for
Nature:

TNFD, SBTN,
GRI, ESRS,
IFRS,...

Source: <https://tnfd.global/publication/recommendations-of-the-taskforce-on-nature-related-financial-disclosures/#publication-content>

Nature at Sustainerv



Our approach

- **We provide expertise** in building organizational capacity, creating custom data models, benchmarking sectors, and engaging stakeholders to prevent disclosure-related missteps.
- **We handle complexity:** Managing nature-related topics requires navigating interconnected scientific, regulatory, and business challenges.
- **We keep pace with change:** With a deep understanding of standards and a materiality-focused mindset, we guide clients all around the world to avoid severe business risks and to seize opportunities.

We offer support for:

- **Baseline Evaluation:** Use TNFD, SBTN, GRI, ESRS, or sector standards to map dependencies and impacts across operations and value chains.
- **Risk and Opportunity Management:** Assess nature-related risks and opportunities and include them into the enterprise risk management
- **Transition Plans:** Integrate nature with climate strategies, e.g. guided by TNFD or GFANZ frameworks. Publish transition plans with goals, actions, targets, accountability, and expected impacts.
- **Stakeholder Engagement:** Collaborate with suppliers and communities on science-based, context-specific action plans.
- **Capacity building:** Strengthen skills, data systems, and governance; align incentives with nature-positive outcomes.
- **Monitoring & Coordination:** Track regulations and work with sector peers on data sharing, policy, and joint action.

Sustainerv provides support for...



TNFD

TNFD provides a voluntary framework for organizations to identify, assess, and disclose nature-related dependencies, impacts, risks, and opportunities, structured around four disclosure pillars: governance, strategy, risk management, and metrics.

GRI

GRI offers comprehensive environmental standards covering topics like biodiversity (GRI 101: Biodiversity 2024), materials (GRI 301), energy (GRI 302), water and effluents (GRI 303), emissions (GRI 305), waste (GRI 306), environmental compliance (GRI 307), and supplier environmental assessment (GRI 308).

ESRS

ESRS defines five mandatory environmental topical standards under the CSRD: climate change (ESRS E1), pollution (ESRS E2), water and marine resources (ESRS E3), biodiversity and ecosystems (ESRS E4), and resource use and circular economy (ESRS E5).

ISSB (IFRS S1 & S2)

Climate-related disclosures (aligned with TCFD) to be expanded by nature-related disclosures (aligned with TNFD).

CDP

Global disclosure system for climate, water, forests, plastics and biodiversity.

SBTN

Science-based targets for nature (land, freshwater, oceans, biodiversity), like SBTi for climate.

→ Many more frameworks and standards exist – do not hesitate to reach out for more information!

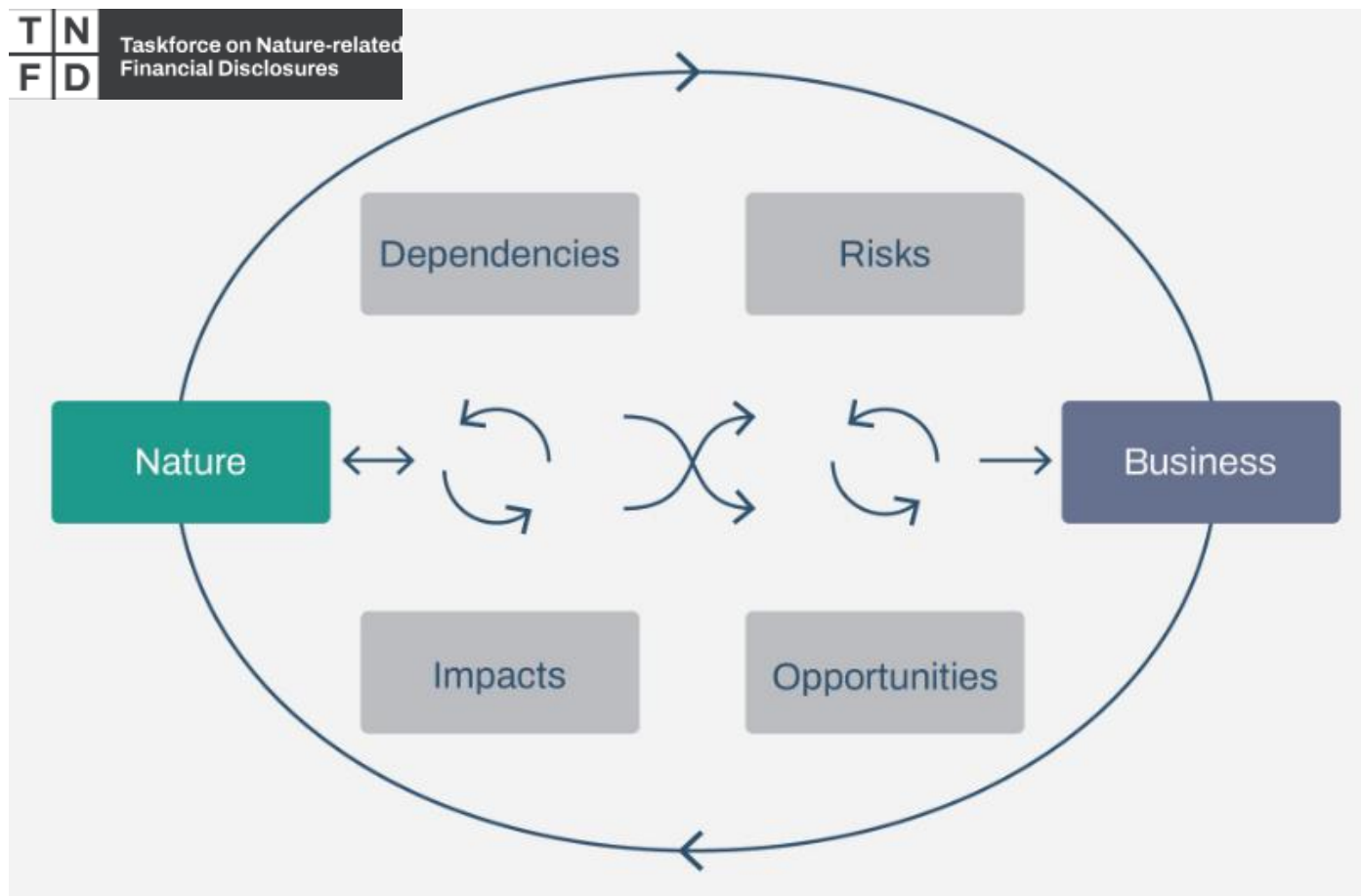
How

... to strengthen resilience and become Nature-positive?

Example TNFD



TNFD as Framework for Nature and Business

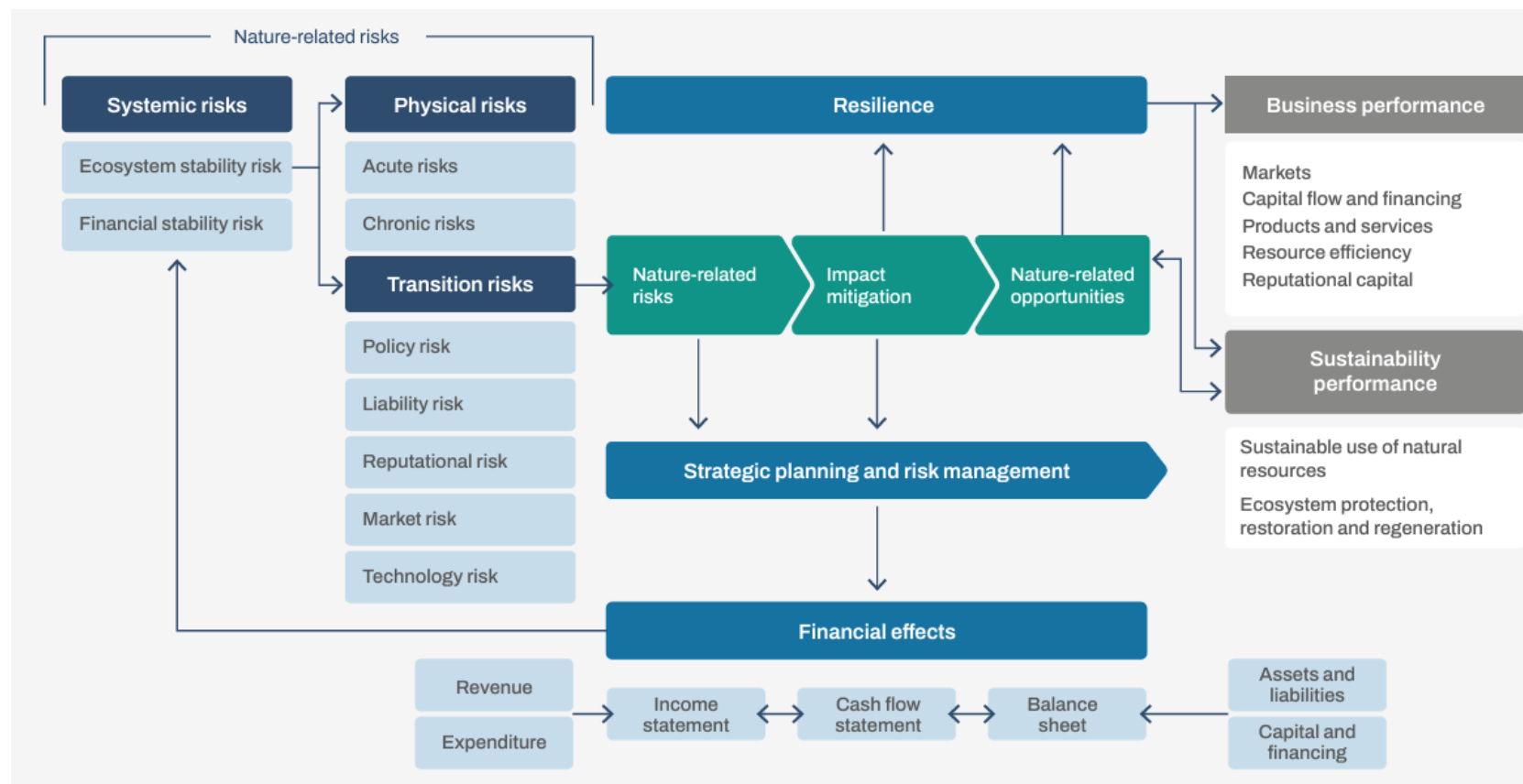


Sustainserv's take

- TNFD extends to Nature, what TCFD has established for Climate.
- Getting ready by using TNFD's LEAP approach:
 - Locate
 - Evaluate
 - Assess
 - Prepare

Source: <https://tnfd.global/publication/recommendations-of-the-taskforce-on-nature-related-financial-disclosures/#publication-content>

TNFD: Risk Management and Resilience

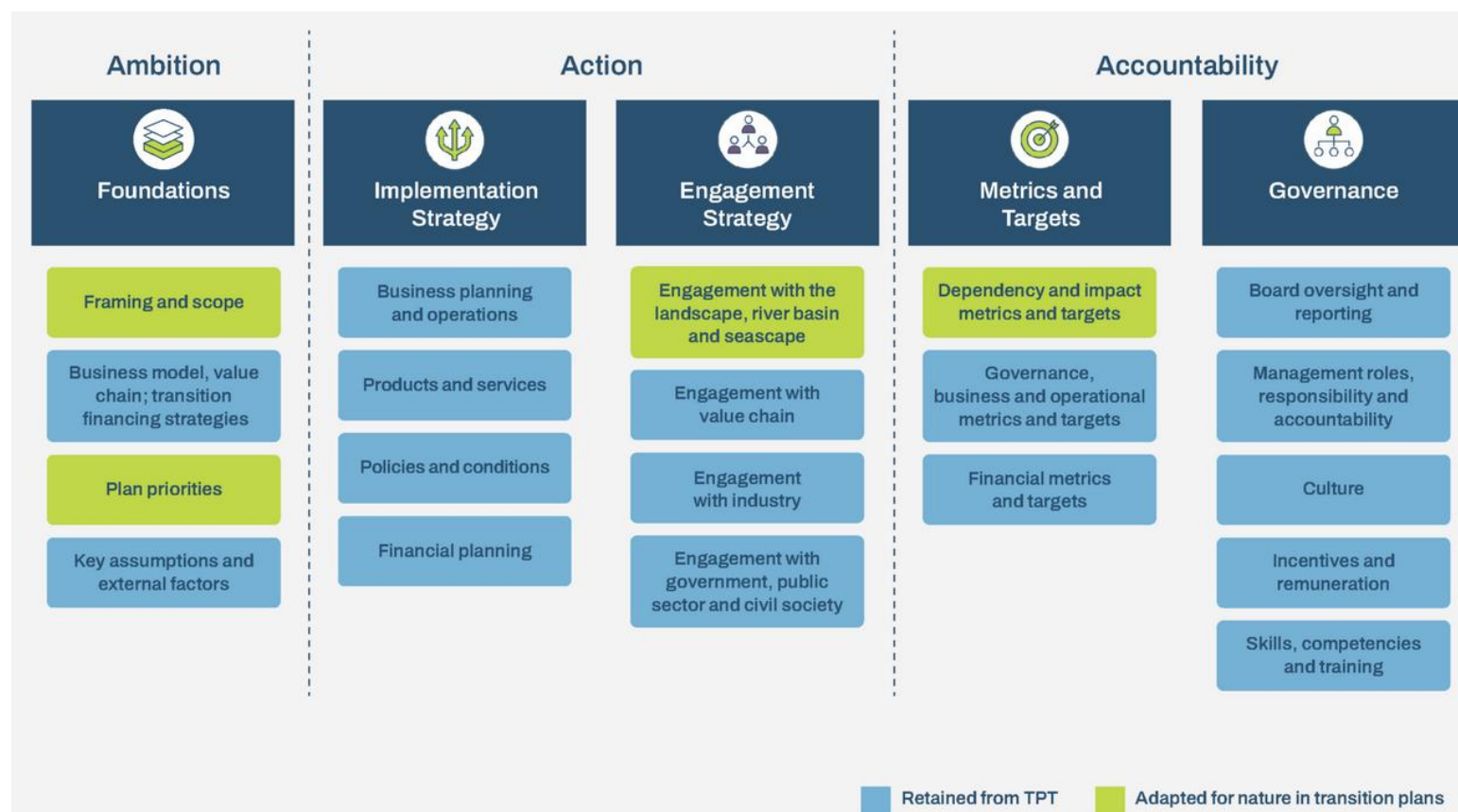


Sustainserv's take

- Integrate nature-related risks into strategic planning and risk management.
- Resilience is based on comprehensive risk and opportunity management.

Source: <https://tnfd.global/publication/recommendations-of-the-taskforce-on-nature-related-financial-disclosures/#publication-content>

TNFD: Nature Transition Plan



Sustainserv's take

- **Nature transition plans** as path to becoming nature-positive
- Alignment with **Climate transition plans** to reach net-zero emissions (e.g., following Transition Plan Taskforce, TPT)

Source: <https://tnfd.global/nature-transition-plans/>

Who

... we are and what we offer



About Sustainerv



Inspiring
Meaningful
Change

Independent management consulting

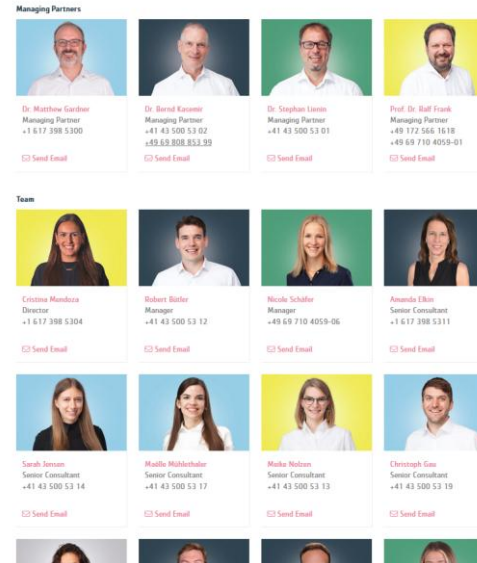
Since 2001

International operations

Offices in Zürich, Frankfurt and Boston

Practical solutions

Across all business sizes and sectors



Our Services



Focus and strategy

- Benchmarking and trend analysis
- ESRS and other materiality assessments
- Stakeholder engagement
- Goal setting
- Policies and Code of Conducts
- ESG Management Processes
- **Climate and Nature risk assessment**
- **TNFD-based LEAP analysis**
- **Climate and nature transition plans**



Implementation and monitoring

- **Net-Zero roadmaps and Nature-positive action plans**
- Sustainable supply chain management
- ESG data collection and analytics
- Energy and greenhouse gas management
- Scope 3 Emissions Calculations
- **Science-based targets for Climate (SBTs) and Nature (SBTN)**



Reporting and Communications

- Sustainability reporting (GRI, SASB, ISSB)
- CSRD/ESRS Reporting
- ESG ratings/rankings (Ecovadis, CSA, Sustainalytics)
- CDP reporting
- TCFD-based reporting
- **TNFD-based reporting**

Contact us. Let's turn ideas into actions for Nature!

Sustainserv

Auf der Mauer 2, 8001 Zürich, Switzerland
zurich@sustainserv.com

Hamburger Allee 45, Frankfurt/M, Germany
frankfurt@sustainserv.com

31 State Street, Boston, MA 02109, USA
boston@sustainserv.com

www.sustainserv.com



Inspiring Meaningful Change

